

BEVENIC

Sustainable and innovative solutions for component and equipment manufacturing throughout the entire life cycle.



Customized products and services with the highest quality standards.

Bevenic is a trusted partner offering industrial process expertise and tailored solutions to develop your business.

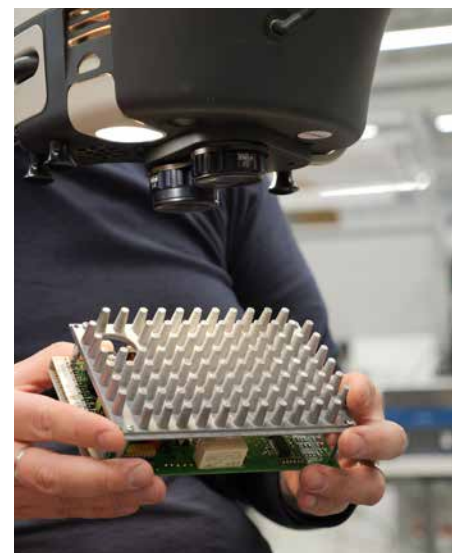
A versatile expert in individual solutions

Our expertise is based on many years of experience in

- electronics
- electrical engineering
- mechanics and
- photonics and their combinations.

We serve our customers comprehensively in

- product design and industrialization
- supply chain management
- manufacturing
- quality control and final distribution.



QUALITY IS AT THE CORE OF OUR BUSINESS

We provide industrial services that meet the highest standards of quality, durability, and safety. Our operations adhere to the most stringent quality standards, and we ensure compliance through continuous improvement of our quality monitoring, testing, and industry-specific standards.

Our cooperation enables



INCREASED EFFICIENCY

We improve the production processes, to achieve better results faster.



COST SAVINGS

We help to reduce operational costs, freeing up the resources for core businesses.



MINIMIZING RISK

High-quality and flexible deliveries ensure business continuity and reduce the risk of interruptions.

As a strategic partner for sustainable and responsible future.

Our sustainable solutions

With our sustainable solutions, we optimize resources at all stages of the product life cycle. We take climate impacts into account in the energy solutions, material use, logistics, transport and packaging of our premises, as well as in production efficiency. We also want to help our partners to produce solutions that optimize the product life cycle and reduce negative environmental impacts.





We operate nationally, enabling us to serve our customers more widely by leveraging the expertise of our different locations and better meeting their unique needs.

BEVENIC

www.bevenic.com



The part of your supply chain you can rely on.

 [LinkedIn/bevenic](https://www.linkedin.com/company/bevenic)